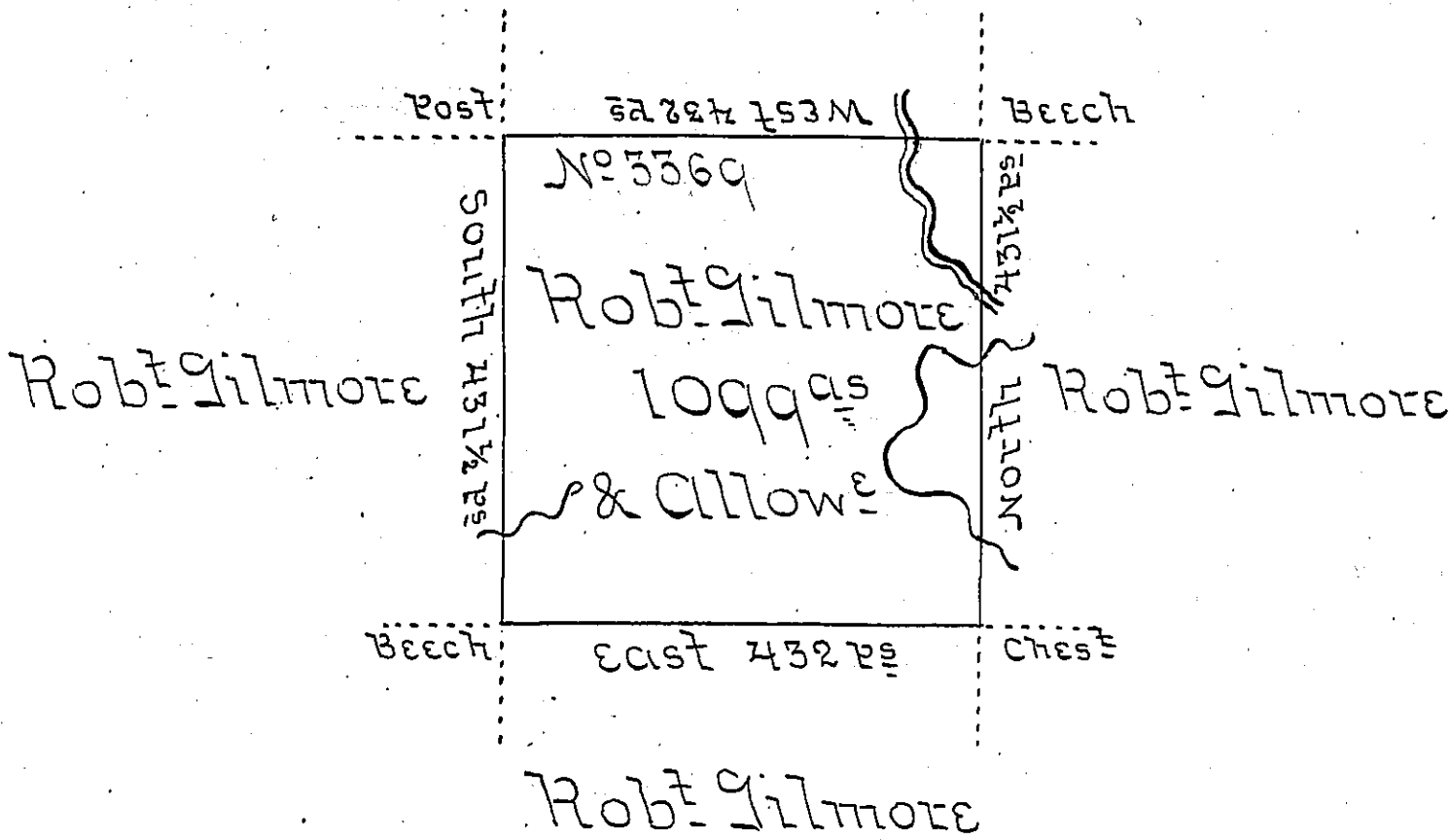


Robt Gilmore



Surveyed the above described tract of land on the sixth day of the 11<sup>th</sup> mo 1795 for Robert Gilmore in pursuance of his Warrant dated the 14<sup>th</sup> day of Decem<sup>r</sup> 1792 adjoining his other land containing one thousand and Ninety Nine acres and the allowance of six Perc<sup>t</sup>.

William Ellis D.S.

Daniel Brodhead Esquire,  
Surveyor General.

IN TESTIMONY that the above is a copy of the original remaining on file in the Department of Internal Affairs of Pennsylvania, made conformably to an Act of Assembly approved the 16th day of February, 1833, I have hereunto set my Hand and caused the Seal of said Department to be affixed at Harrisburg, this fifth day of January 1905.

*Laurel P. ...*  
Secretary of Internal Affairs.